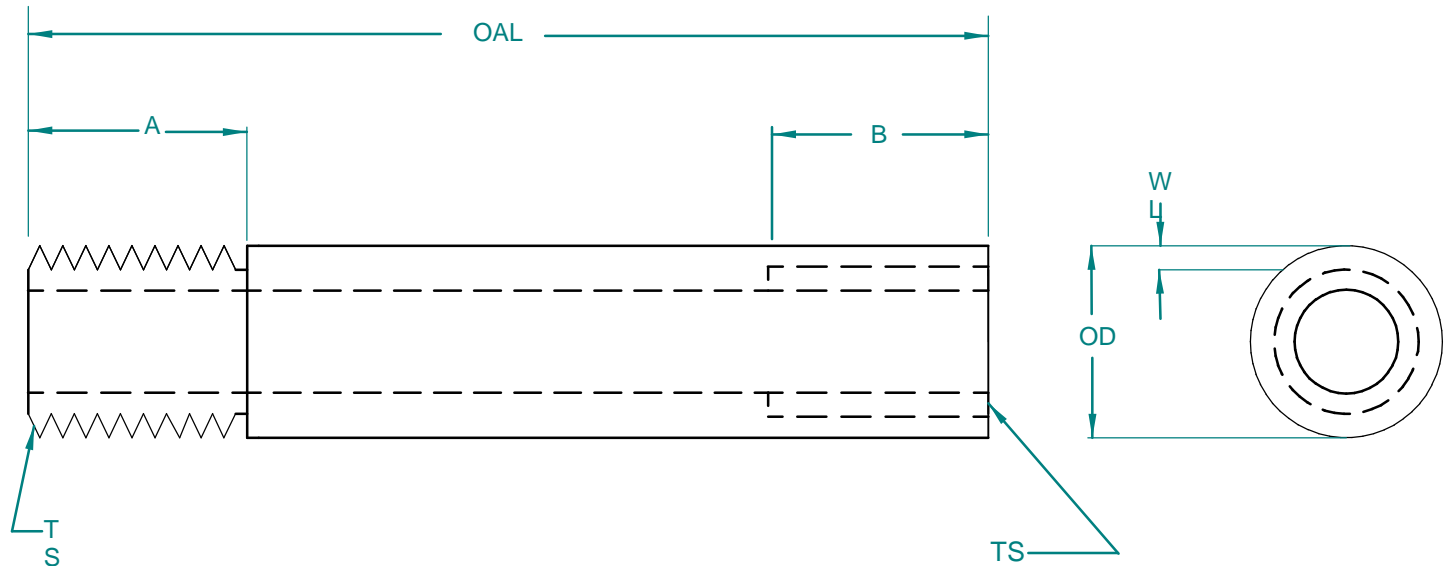


THREAD SIZE* (TS)	BASIC MAJOR DIAMETER	TAP DRILL SIZE**
#0-80	.0600	#50
#2-56	.0860	#50
#2-64	.0860	#43
#4-40	.1120	#42
#4-48	.1120	#38
#5-40	.1250	#37
#5-44	.1250	#36
#6-32	.1380	#33
#6-40	.1380	#29
#8-32	.1640	#29
#8-36	.1640	#25
#10-24	.1900	#21
#10-32	.1900	#7
1/4-20	.2500	#3
1/4-28	.2500	F
5/16-18	.3125	I
5/16-24	.3125	5/16
3/8-16	.3750	Q
3/8-24	.3750	U
7/16-14	.4375	25/64
7/16-20	.4375	27/64
1/2-13	.5000	29/64
1/2-20	.5000	31/64
9/16-12	.5625	33/64
9/16-18	.5625	17/32
5/8-11	.6250	37/64
5/8-18	.6250	21/32
3/4-10	.7500	11/16
3/4-16	.7500	49/64
7/8-9	.8750	13/16
7/8-14	.8750	7/8
1-8	1.0000	15/16
1-14	1.0000	63/64
1-1/8-7	1.1250	1-3/64
1-1/8-12	1.1250	



- ROUTER
- 1) CUT TUBE TO OAL
  - 2) WASH AND DRY
  - 3) KNOURL TO SPECIFICATION
  - 4) FINISH AND CLEAN

Tolerances : .x #x.030 +/- .010 .xxx +/- .005 Angles: +/- 1 Deg	<b>EAGLE STAINLESS TUBE &amp; FABRICATION, INC.</b>		
	Title      THREADED TUBE : :		
Drawn By:	size :	scale :	Dwg #: Re v
Date: e:	Material:		